






Worklist: 6510

<u>LAB CASE</u>	<u>ITEM</u>	<u>ITEM TYPE</u>	<u>DESCRIPTION</u>	
M2023-3276	2	UCK	AM 25/AM 26 Urine MultiDrug/THC Screen by LC-QQQ	
M2023-3638	2	UCK	AM 25/AM 26 Urine MultiDrug/THC Screen by LC-QQQ	
M2023-3677	3	UCK	AM 25/AM 26 Urine MultiDrug/THC Screen by LC-QQQ	
M2023-3702	5	UCK	AM 25/AM 26 Urine MultiDrug/THC Screen by LC-QQQ	
M2023-3702	6	UCK	AM 25/AM 26 Urine MultiDrug/THC Screen by LC-QQQ	
M2023-3719	1	BCK	AM 25/AM 26 Blood MultiDrug/THC Screen by LC-QQQ	
M2023-3776	1	UCK	AM 25/AM 26 Urine MultiDrug/THC Screen by LC-QQQ	
M2023-3803	3	UCK	AM 25/AM 26 Urine MultiDrug/THC Screen by LC-QQQ	
M2023-3811	1	COBCK	AM 25/AM 26 Blood MultiDrug/THC Screen by LC-QQQ	
M2023-3813	2	BCK	AM 25/AM 26 Blood MultiDrug/THC Screen by LC-QQQ	
M2023-3839	1	BCK	AM 25/AM 26 Blood MultiDrug/THC Screen by LC-QQQ	
M2023-3891	1	COBCK	AM 25/AM 26 Blood MultiDrug/THC Screen by LC-QQQ	
M2023-3892	1	COBCK	AM 25/AM 26 Blood MultiDrug/THC Screen by LC-QQQ	
M2023-3893	1	COBCK	AM 25/AM 26 Blood MultiDrug/THC Screen by LC-QQQ	
M2023-3909	1	BCK	AM 25/AM 26 Blood MultiDrug/THC Screen by LC-QQQ	
M2023-3987	4	UCK	AM 25/AM 26 Urine MultiDrug/THC Screen by LC-QQQ	
M2023-4120	2	UCK	AM 25/AM 26 Urine MultiDrug/THC Screen by LC-QQQ	
P2023-2643	1	UCK	AM 25/AM 26 Urine MultiDrug/THC Screen by LC-QQQ	
P2023-2674	1	BCK	AM 25/AM 26 Blood MultiDrug/THC Screen by LC-QQQ	
P2023-2855	1	BCK	AM 25/AM 26 Blood MultiDrug/THC Screen by LC-QQQ	
P2023-2903	1	BCK	AM 25/AM 26 Blood MultiDrug/THC Screen by LC-QQQ	

Worklist: 6510

CS

<u>LAB CASE</u>	<u>ITEM</u>	<u>ITEM TYPE</u>	<u>DESCRIPTION</u>	
P2023-2905	2	BCK	AM 25/AM 26 Blood MultiDrug/THC Screen by LC-QQQ	
P2023-2906	1	BCK	AM 25/AM 26 Blood MultiDrug/THC Screen by LC-QQQ	
P2023-2907	1	BCK	AM 25/AM 26 Blood MultiDrug/THC Screen by LC-QQQ	
P2023-2908	1	BCK	AM 25/AM 26 Blood MultiDrug/THC Screen by LC-QQQ	
P2023-3009	1	UCK	AM 25/AM 26 Urine MultiDrug/THC Screen by LC-QQQ	

AM# 25: Multi-Drug Screen in Blood and Urine by LC-MS/MS

Extraction Date: 09/26/2023

Plate lot#: 220802

Mobile phase A: 10mM Amm Form

Instant Buffer I

Blank Blood Lot: Lampire 23E52981

LCMS-QQQ ID: 069901

Analyst: Celena Shrum

Plate Retest Date: 07/23/2023- external control used

Mobile phase B: 0.1% Formic Acid in MeOH

Ethyl Acetate LC Methanol

Column: Phenomenex Phenyl Hexyl (4.6x50mm, 2.6um)

Blank Urine Lot: POC021022

Pre-Analytic:

- 1. Check levels of mobile phases and needle wash refill as needed. Ensure waste is not full.
- 2. Ensure correct column is installed and begin mobile phase flow allow to equilibrate ~ 30 minutes.

Analytic:

- 1. Remove standards, plate, controls, and samples from cold storage. Allow to reach room temperature.
- 2. Urine Hydrolysis (if applicable): In blank well, add 250µL urine, 40µL BG Turbo, and 100µL Instant Buffer I. Place on plate shaker for 5 minutes.
- 3. Using a calibrated pipette, pipette **250µL blood or 250µL hydrolyzed urine** into the appropriate wells of the analytical (standards) plate. **Pipette ID: 42**
- 4. Pipette **250µL 0.5 M ammonium hydroxide** in wells of analytical plate.
- 5. Place on shaking incubator at ambient temp., 900rpm for 15 minutes.
- 6. Transfer **200-450µL of blood+base and urine+base (if applicable)** mixture to corresponding wells of SLE+ plate. Amount transferred: 300µl
- 7. Apply positive pressure for approx. 10-15 seconds (or until no liquid remains on top of sorbent). **(Load at 85-100 PSI- Selector to the right). Manifold ID: 067104**
- 8. Wait 5 minutes.
- 9. Add **900uL ethyl acetate.**
- 10. Wait 5 minutes.
- 11. Apply positive pressure for approx. 15 seconds. **(10-15 PSI- Selector to the left).**
- 12. Add **900uL ethyl acetate.**
- 13. Wait 5 minutes.
- 14. Apply positive pressure for approx. 15 seconds. **(10-15 PSI- Selector to the left).**
- 15. Remove plate containing eluate.
- 16. Add 50µl of 1% HCl in MeOH to all wells in the run and place ACT cover on top of plate prior to drying.
- 17. Place on SPE Dry and evaporate to dryness at approx. 35°C.
- 18. Reconstitute in **100µL 20% LC MeOH** and heat seal plate with foil. Place in autosampler and run worklist.

Post-Analytic

- 1. Open quantitation software and create a new quantitation batch.
- 2. Make necessary changes to integration limits
- 3. Evaluate samples, S/N of primary transition >5 and S/N of secondary transition >3 or evaluation of peak symmetry and resolution. Within +/- 2% or 0.1 min RT of administrative control. Calculated concentration of 5 or greater or 2-5 for discretionary range.
- 4. Did all QCs pass for each analyte? If no, describe issue in comments (below).
- 5. Central File Packet to include: LIMS Worklist, Method Checklist, Calibration and Control Reports

COMMENTS:

	1	2	3	4	5	6	7	8	9	10	11	12
A	CAL				M2023-3893-1	P2023-2908-1	M2023-3987-4					
B				Blood External Control	M2023-3909-1	M2023-3276-2	M2023-4120-2					
C				M2023-3719-1	P2023-2674-1	M2023-3638-2	P2023-2643-1	Blood NEG				
D				M2023-3811-1	P2023-2855-1	M2023-3677-3	P2023-3009-1					
E				M2023-3813-2	P2023-2903-1	M2023-3702-5	Urine NEG					
F				M2023-3839-1	P2023-2905-2	M2023-3702-6	Urine External Control					
G				M2023-3891-1	P2023-2906-1	M2023-3776-1						
H				M2023-3892-1	P2023-2907-1	M2023-3803-3						

Samples were moved during SLE portion of the extraction. Refer to SLE Plate Map

	1	2	3	4	5	6	7	8	9	10	11	12
A	CAL	M2023-3893-1	P2023-2908-1	M2023-3987-4								
B	Blood External Control	M2023-3909-1	M2023-3276-2	M2023-4120-2								
C	M2023-3719-1	P2023-2674-1	M2023-3638-2	P2023-2643-1	Blood NEG							
D	M2023-3811-1	P2023-2855-1	M2023-3677-3	P2023-3009-1								
E	M2023-3813-2	P2023-2903-1	M2023-3702-5	Urine NEG								
F	M2023-3839-1	P2023-2905-2	M2023-3702-6	Urine External Control								
G	M2023-3891-1	P2023-2906-1	M2023-3776-1									
H	M2023-3892-1	P2023-2907-1	M2023-3803-3									

SLE Plate Map

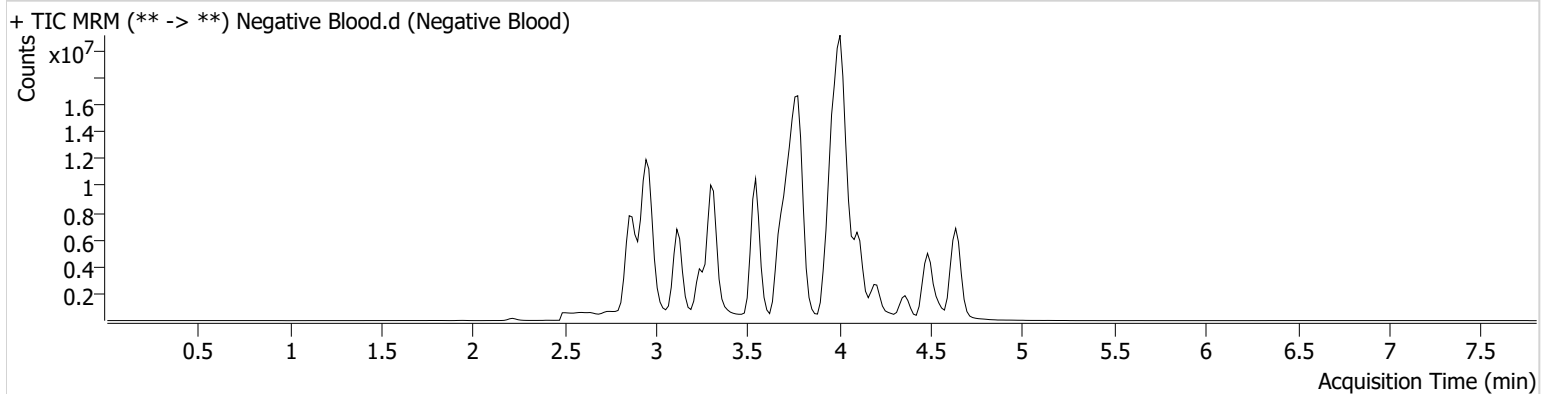
AM #25 Multi-Drug Screen. Results



Batch results D:\MassHunter\Data\2023\AM 25 26\092623 AM 25 26 CS TS\QuantResults\AM 25 CS.batch.bin
Calibration Last Update 9/29/2023 10:22:48 AM

Instrument	Falco (069901)	Data File	Negative Blood.d
Type	Sample	Sample	Negative Blood
Acq. Method	AM 25 MDS.m	Operator	Celena Shrum
Sample Position	P2-C5	Comment	Only drugs and concentrations listed on the laboratory report itself are appropriate to be used for interpretation purposes. Any drugs or values included in the notes but not included on the report are used by laboratory personnel to make determinations/reach conclusions within the confines of the methods.
Injection Volume	5		
Acq. Date-Time	9/26/2023 8:34:06 PM		
Sample Info.			

Sample Chromatogram





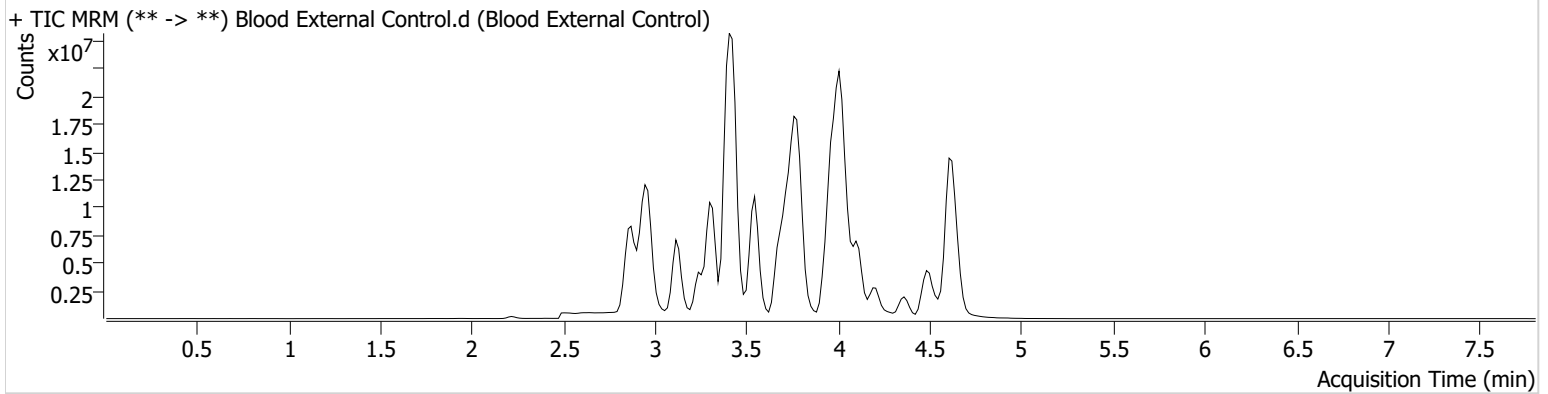
AM #25 Multi-Drug Screen. Results

Batch results D:\MassHunter\Data\2023\AM 25 26\092623 AM 25 26 CS\QuantResults\AM 25 CS.batch.bin
Calibration Last Update 9/29/2023 10:22:48 AM

Instrument Falco (069901) **Data File** Blood External Control.d
Type Sample **Sample** Blood External Control
Acq. Method AM 25 MDS.m **Operator** Celena Shrum
Sample Position P2-B1 **Comment**
Injection Volume 5
Acq. Date-Time 9/26/2023 8:42:32 PM
Sample Info.

Only drugs and concentrations listed on the laboratory report itself are appropriate to be used for interpretation purposes. Any drugs or values included in the notes but not included on the report are used by laboratory personnel to make determinations/reach conclusions within the confines of the methods.

Sample Chromatogram



Name	RT	Resp.	S/N	Ratio	S/N	ISTD Resp.	Final Conc.
Alprazolam	4.608	22248492	1800.17	92.3	1217.84	22498393	124.0149 ng/ml
Tramadol	3.409	111361710	10647.76	2.8 High	417.62	58029845	45.5773 ng/ml



Idaho State Police Forensic Services

AM #25 Blood Multi-Drug Screen by LCMS-QQQ

And

**AM #28 Blood Multi-Drug Confirmatory Analysis by
LCMS-QQQ---Panel 1**

Methanol External Control Solution (Lot: 072123)

100 µL of 1mg/mL stock of each drug was added to 9800 µL of LC MeOH.

<i>Component</i>	<i>Source</i>	<i>Source Lot Number</i>	<i>Expiration Date</i>
Methanol (LCMS)	Fisher	220776	N/A
Tramadol	Cerilliant	FE10051901	12/31/2024
Alprazolam	Cerilliant	FE06102008	06/30/2025
Prepared:	07/21/2023		
Expires:	07/21/2024		
Prepared By:	Tamara Salazar		

Blood External Control Solution (Lot: WS072123)

100 µL of methanol external control solution was added to 9900 µL of blood.

Approximately 100 ng/mL of each compound.

<i>Component</i>	<i>Source</i>	<i>Source Lot Number</i>
Negative Blood	Lampire	23A52594
Methanol External Control Solution		072123
Prepared:	07/21/2023	
Expires:	07/21/2024	
Prepared by:	Tamara Salazar	

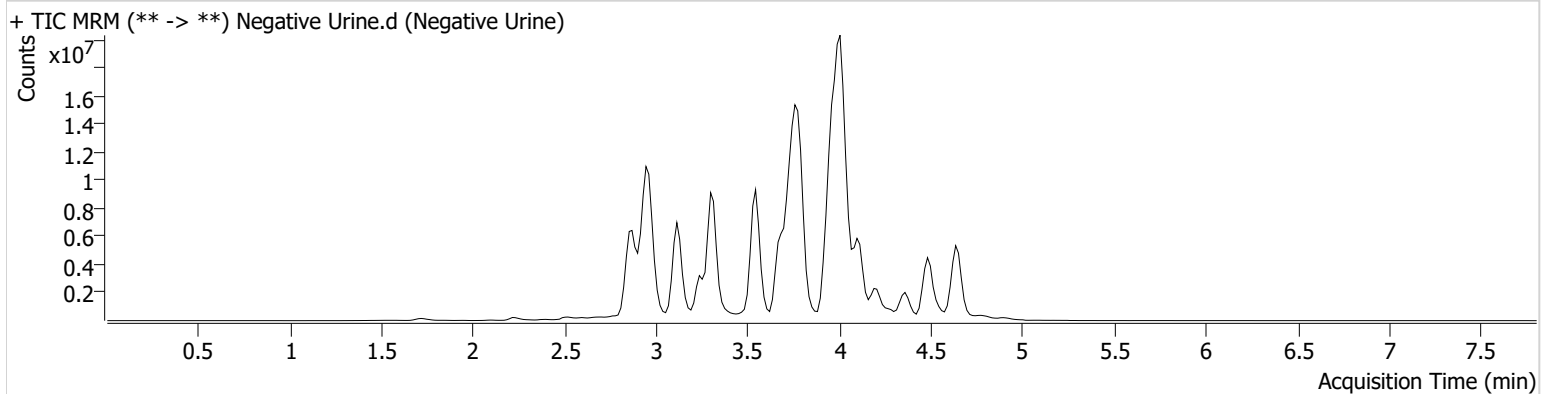
AM #25 Multi-Drug Screen. Results



Batch results D:\MassHunter\Data\2023\AM 25 26\092623 AM 25 26 CS TS\QuantResults\AM 25 CS.batch.bin
Calibration Last Update 9/29/2023 10:22:48 AM

Instrument	Falco (069901)	Data File	Negative Urine.d
Type	Sample	Sample	Negative Urine
Acq. Method	AM 25 MDS.m	Operator	Celena Shrum
Sample Position	P2-E4	Comment	Only drugs and concentrations listed on the laboratory report itself are appropriate to be used for interpretation purposes. Any drugs or values included in the notes but not included on the report are used by laboratory personnel to make determinations/reach conclusions within the confines of the methods.
Injection Volume	5		
Acq. Date-Time	9/26/2023 10:57:11 PM		
Sample Info.			

Sample Chromatogram





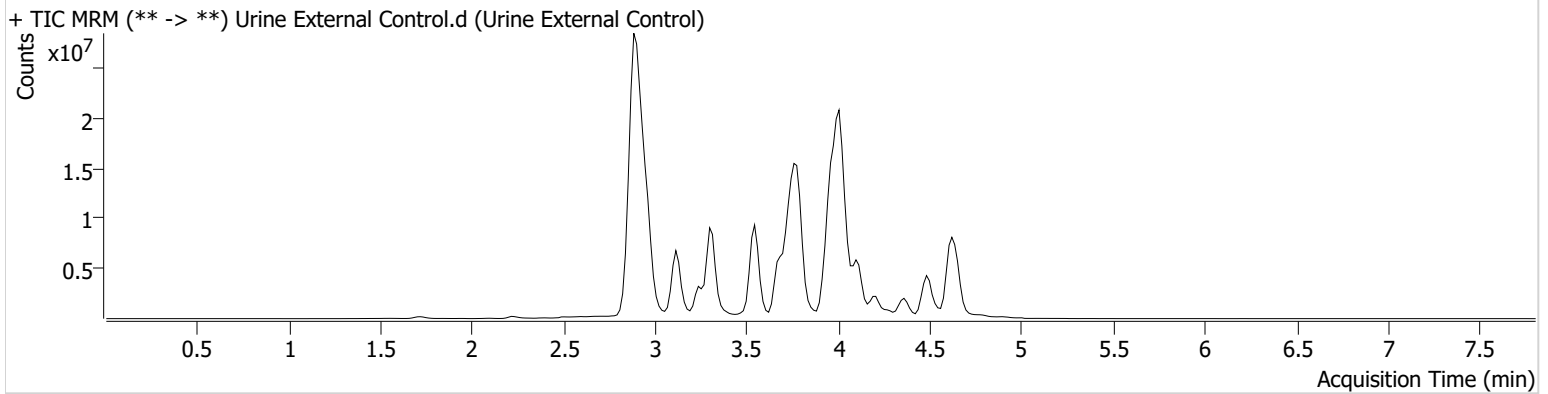
AM #25 Multi-Drug Screen. Results

Batch results D:\MassHunter\Data\2023\AM 25 26\092623 AM 25 26 CS TS\QuantResults\AM 25 CS.batch.bin
Calibration Last Update 9/29/2023 10:22:48 AM

Instrument Falco (069901) **Data File** Urine External Control.d
Type Sample **Sample** Urine External Control
Acq. Method AM 25 MDS.m **Operator** Celena Shrum
Sample Position P2-F4 **Comment**
Injection Volume 5
Acq. Date-Time 9/26/2023 11:05:37 PM
Sample Info.

Only drugs and concentrations listed on the laboratory report itself are appropriate to be used for interpretation purposes. Any drugs or values included in the notes but not included on the report are used by laboratory personnel to make determinations/reach conclusions within the confines of the methods.

Sample Chromatogram



Name	RT	Resp.	S/N	Ratio	S/N	ISTD Resp.	Final Conc.
Alprazolam	4.608	9167248	257.34	91.6	428.63	18749130	61.3172 ng/ml
Amphetamine	2.894	19421768	23773.01	194.4	4443.94	10113918	73.3746 ng/ml
O-desmethyl-tramadol	2.919	42781586	1218.18	6.9 High	287.54	53900049	44.3103 ng/ml



Idaho State Police Forensic Services

AM #25 Urine Multi-Drug Screen by LCMS-QQQ

And

**AM #28 Urine Multi-Drug Confirmatory Analysis by
LCMS-QQQ---Panel 1**

Methanol External Control Solution (Lot: 120320)

100 µL of 1mg/mL stock was added to each drug to 9700 µL of LC MeOH.

<i>Component</i>	<i>Source</i>	<i>Source Lot Number</i>	<i>Expiration Date</i>
Methanol (LCMS)	Fisher	197468	
O-desmethyl Tramadol	Cerilliant	FN01241702	04/30/2022
Amphetamine	Cerilliant	FE04061701	06/30/2022
Alprazolam	Cerilliant	FE07061604	07/31/2021
Prepared:	12/03/2020		
Prepared By:	Celena Shrum		

Urine External Control Solution (Lot: WS032122)

100 µL of methanol external control solution was added to 9900 µL of urine.

Approximately 100 ng/mL of each compound.

<i>Component</i>	<i>Source</i>	<i>Source Lot Number</i>
Negative Urine	Pocatello Lab	POC021022
Methanol External Control Solution		120320
Prepared:	03/21/22	
Prepared by:	Tamara Salazar	

Per method- no expiration date for urine control.

CS 10/10/23

AM #25 Multi-Drug Screen. Results

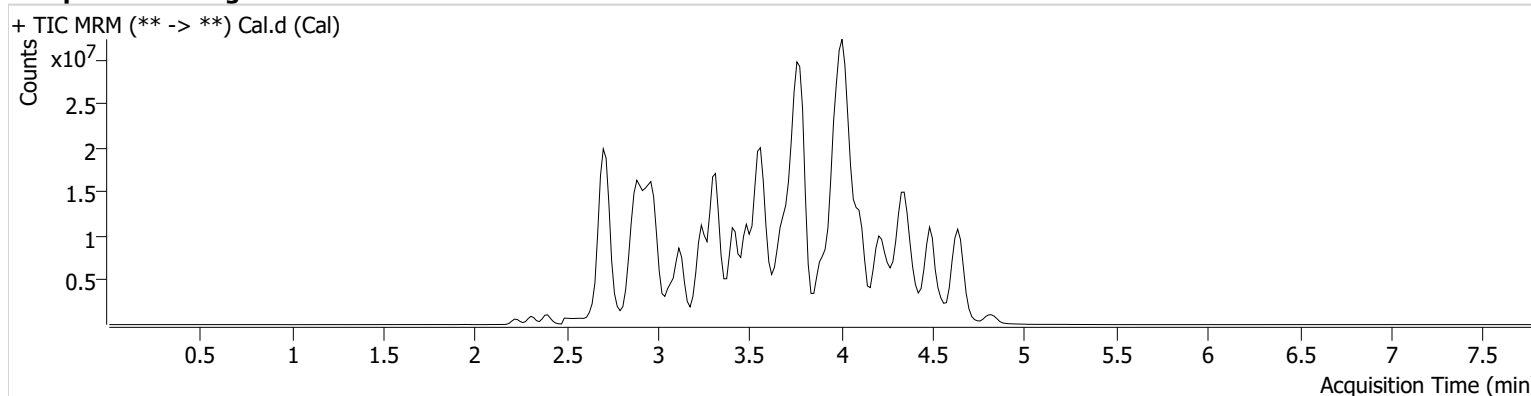


Batch results D:\MassHunter\Data\2023\AM 25 26\092623 AM 25 26 CS TS\QuantResults\AM 25 CS.batch.bin
Calibration Last Update 10/3/2023 11:51:49 AM

Instrument Falco (069901) **Data File** Cal.d
Type Cal **Sample** Cal
Acq. Method AM 25 MDS.m **Operator** Celena Shrum
Sample Position P2-A1 **Comment**
Injection Volume 5
Acq. Date-Time 9/26/2023 8:25:30 PM
Sample Info.

Only drugs and concentrations listed on the laboratory report itself are appropriate to be used for interpretation purposes. Any drugs or values included in the notes but not included on the report are used by laboratory personnel to make determinations/reach conclusions within the confines of the methods.

Sample Chromatogram



Name	RT	Resp.	S/N	Ratio	S/N	ISTD Resp.	Final Conc.
10-OH-Carbamazepine	3.780	4428700	243.65	107.9	652.66	18567803	10.0000 ng/ml
6-MAM	2.851	75385	33913.24	64.0	18411.69	1733599	10.0000 ng/ml
7-aminoclonazepam	3.561	1304508	302.92	83.5	1614.63	5205468	10.0000 ng/ml
7-aminoflunitrazepam	3.761	2187687	890.42	22.3	308426.78	5205468	10.0000 ng/ml
9-Hydroxyrisperidone	3.785	9510281	7174817.43	2.5	656.16	36502831	10.0000 ng/ml
Acetyl Fentanyl	3.727	523375	580.29	68.7	128383.93	36661358	10.0000 ng/ml
Acetyl Norfentanyl	2.890	587505	4105.70	33.8	248.52	36661358	10.0000 ng/ml
a-hydroxyalprazolam	4.483	282504	239355.41	52.0	74168.25	5205468	10.0000 ng/ml
alpha-hydroxymidazolam	4.481	1990682	306.24	60.8	428.77	5205468	10.0000 ng/ml
Alpha-PHP	3.765	4180292	11753.25	37.1	415.52	36661358	10.0000 ng/ml
alpha-PVP	3.489	7264374	782.07	47.4	432.31	15056160	10.0000 ng/ml
Alprazolam	4.608	2084669	2877.05	95.4	678.39	26143383	10.0000 ng/ml
Amitriptyline	4.366	2562509	201.94	70.4	437.66	7144851	10.0000 ng/ml
Amphetamine	2.894	3940376	3224.49	220.6	435.54	15056160	10.0000 ng/ml
Benzoylecgonine	3.392	449511	2464.93	27.7	92.44	644341	10.0000 ng/ml
Bromazolam	4.634	135013	536.34	281.4	30878.00	26143383	10.0000 ng/ml
Brompheniramine	3.990	164888	280.26	966.5	787.35	56683319	10.0000 ng/ml
Buprenorphine	4.015	839883	2152.32	13.7	64176.23	2640261	10.0000 ng/ml
Bupropion	3.688	5194680	48427.63	64.4	849.57	23237318	10.0000 ng/ml
Carbamazepine	4.229	13335798	∞	91.7	815.76	428519	10.0000 ng/ml
Carisoprodol	4.213	2196425	520126.42	62.8	111.32	9574273	10.0000 ng/ml
Chlordiazepoxide	4.595	271560	408.58	174.8	196.83	26143383	10.0000 ng/ml
Chlorpheniramine	3.901	10194601	744.14	0.2	11.74	13684209	10.0000 ng/ml
Chlorpromazine	4.514	1569741	14992.99	145.5	408.40	6422709	10.0000 ng/ml
Citalopram	4.020	3854063	503.30	34.0	433.10	56683319	10.0000 ng/ml
Clomipramine	4.546	1684344	6478.92	77.2	2711.19	56683319	10.0000 ng/ml
Clonazepam	4.422	3022945	329.50	30.8	314483.29	428519	10.0000 ng/ml
Clonazolam	4.357	1880085	9686.67	34.3	211030.06	26143383	10.0000 ng/ml
Clozapine	4.097	5872141	9385.57	79.4	2274.60	22477320	10.0000 ng/ml
Cocaethylene	3.743	6080393	2472350.78	48.0	1975292.59	31826250	10.0000 ng/ml

AM #25 Multi-Drug Screen. Results



Name	RT	Resp.	S/N	Ratio	S/N	ISTD Resp.	Final Conc.
Cocaine	3.544	6607545	2379471.65	19.6	1265.45	31826250	10.0000 ng/ml
Codeine	2.733	434205	17989.05	96.0	1558.65	10547014	10.0000 ng/ml
Cyclobenzaprine	4.288	4391563	708.11	8.0	69.90	7144851	10.0000 ng/ml
Desipramine	4.320	6692477	741.21	41.9	822.10	7144851	10.0000 ng/ml
Dextromethorphan	4.025	3027072	617.56	74.7	565.34	13684209	10.0000 ng/ml
Dextrorphan	3.363	4013638	23343.96	52.2	9930.95	13684209	10.0000 ng/ml
Diazepam	4.826	2262623	642.61	91.9	1036.53	26143383	10.0000 ng/ml
Dihydrocodeine	2.701	1251480	615.34	61.7	455.79	10547014	10.0000 ng/ml
Diphenhydramine	3.995	14199464	1724904.38	28.6	1177.46	56683319	10.0000 ng/ml
DMT	2.953	570493	515.21	111.6	2020.21	13684209	10.0000 ng/ml
Doxepin	4.086	2968898	496.59	48.0	54.17	23906944	10.0000 ng/ml
Doxylamine	3.578	12305184	339.05	93.4	588.91	13684209	10.0000 ng/ml
Duloxetine	4.271	116505	2985.48	782.5	8794.13	1281461	10.0000 ng/ml
EDDP	4.055	1404630	411113.57	49.6	432.18	2720689	10.0000 ng/ml
Etazolam	4.487	3944839	881.34	50.0	373.86	26143383	10.0000 ng/ml
Etizolam	4.619	312226	137668.42	389.2	714091.66	26143383	10.0000 ng/ml
Fentanyl	3.942	403915	198.06	75.5	6110.42	25168565	10.0000 ng/ml
Flualprazolam	4.467	1253073	563516.78	121.4	552589.20	26143383	10.0000 ng/ml
Flunitrazepam	4.500	581533	92.32	36.9	344.73	26143383	10.0000 ng/ml
Fluorofentanyl	3.971	529609	62305.49	89.4	296.31	25168565	10.0000 ng/ml
Fluoxetine	4.285	3842745	940.71	7.1	149.97	3530442	10.0000 ng/ml
Flurazepam	4.063	4146848	955.32	22.9	890.33	26143383	10.0000 ng/ml
Hydrocodone	2.931	2131264	2187.03	39.6	770.19	10547014	10.0000 ng/ml
Hydromorphone	2.399	2003896	3314.21	74.4	23652.11	532398	10.0000 ng/ml
Hydroxyzine	4.387	3877555	1214.07	79.9	757.05	22477320	10.0000 ng/ml
Imipramine	4.334	8263036	3365.51	64.1	1156.07	7144851	10.0000 ng/ml
Ketamine	3.319	4244740	4239.12	35.7	232.78	14811145	10.0000 ng/ml
Lamotrigine	3.472	492983	679.40	77.4	386.14	56683319	10.0000 ng/ml
Levamisole	2.891	3348568	1696.37	88.7	624.72	31826250	10.0000 ng/ml
Levetiracetam	2.664	2479937	1789.80	167.3	798.04	56683319	10.0000 ng/ml
Lorazepam	4.422	663411	337.74	279.2	2241.60	26143383	10.0000 ng/ml
Maprotiline	4.350	1953137	166.85	76.7	1650.78	7144851	10.0000 ng/ml
MDA	2.999	4436183	542.09	79.4	5.67	38851286	10.0000 ng/ml
MDEA	3.213	6621590	896.00	52.9	522.62	38851286	10.0000 ng/ml
MDMA	3.075	7504913	1261.53	49.7	506.99	38851286	10.0000 ng/ml
Meperidine	3.564	3318427	593.10	60.4	1031.70	13684209	10.0000 ng/ml
Meprobamate	3.675	1201567	279.73	23.8	77.71	9574273	10.0000 ng/ml
Methadone	4.346	10464317	1074.89	46.8	244.55	2720689	10.0000 ng/ml
Methamphetamine	2.986	10531623	376.21	36.9	333.06	38851286	10.0000 ng/ml
Methocarbamol	3.580	480418	554.53	88.8	77.96	2720689	10.0000 ng/ml
Methylphenidate	3.489	15125525	∞	25.0	73.80	22847257	10.0000 ng/ml
Metoprolol	3.424	1089656	232.21	99.5	5044.67	13684209	10.0000 ng/ml
Midazolam	4.359	767739	754.90	91.5	252040.74	26143383	10.0000 ng/ml
Mirtazapine	3.640	3850517	3479.72	218.1	20616.07	13684209	10.0000 ng/ml
Mitragynine	4.078	795760	6373.39	238.6	439.03	13684209	10.0000 ng/ml
Morphine	2.233	448816	∞	84.8	131.56	532398	10.0000 ng/ml
Norbuprenorphine	3.785	97482	68020.76	99.0	58205.61	2640261	10.0000 ng/ml
Nordiazepam	4.674	2259176	7901.57	61.6	262.97	26143383	10.0000 ng/ml
Norfentanyl	3.319	9521166	549.20	36.1	651.75	36661358	10.0000 ng/ml
Norhydrocodone	2.918	182917	143.66	45.3	52.44	532398	10.0000 ng/ml
Norketamine	3.289	928004	603.41	493.8	2443.16	14811145	10.0000 ng/ml
Normeperidine	3.581	7197476	5240.11	69.4	1117.08	56683319	10.0000 ng/ml
Noroxycodone	2.870	1804194	183.37	28.6	168.27	14811145	10.0000 ng/ml
Nortriptyline	4.367	2069061	753.74	66.1	264.53	7144851	10.0000 ng/ml
O-desmethyl-tramadol	2.904	10153561	630.64	5.6	554.65	56683319	10.0000 ng/ml
O-desmethylvenlafaxine	3.240	2407851	855.32	627.5	22918.19	11633779	10.0000 ng/ml
Olanzapine	3.205	807780	562.22	43.7	487.19	428519	10.0000 ng/ml
Oxazepam	4.487	2310153	942.12	73.1	442.36	13896700	10.0000 ng/ml
Oxycodone	2.883	3700745	1174.97	28.7	667.33	14811145	10.0000 ng/ml



AM #25 Multi-Drug Screen. Results

Name	RT	Resp.	S/N	Ratio	S/N	ISTD Resp.	Final Conc.
Oxymorphone	2.305	1908412	121.27	45.9	510.00	532398	10.0000 ng/ml
Paroxetine	4.282	559149	353.92	47.8	947.67	3530442	10.0000 ng/ml
Phenazepam	4.619	3232397	45189.26	69.2	723514.63	26143383	10.0000 ng/ml
Phencyclidine	3.889	8680332	2055.68	64.9	703.06	13684209	10.0000 ng/ml
Phentermine	3.139	2027728	162.50	6.4	42.27	22847257	10.0000 ng/ml
Phenytoin	4.120	859545	629.58	80.6	264.24	428519	10.0000 ng/ml
Primidone	3.475	2581334	3437.37	88.8	326.76	428519	10.0000 ng/ml
Promethazine	4.240	9922158	596.76	29.5	805.55	56683319	10.0000 ng/ml
Pseudoephedrine	2.710	58537885	18204.04	33.6	106787.69	38851286	10.0000 ng/ml
Quetiapine	4.187	5440709	3886.55	55.1	1063.27	38744223	10.0000 ng/ml
Risperidone	3.955	8706098	1086.20	11.9	1629.97	36502831	10.0000 ng/ml
Sertraline	4.486	823853	132535.84	110.4	374.58	3530442	10.0000 ng/ml
Sufentanil	4.186	335835	3470.22	81.6	548.78	36661358	10.0000 ng/ml
Tapentadol	3.429	6968498	2185.03	35.2	3108.90	14811145	10.0000 ng/ml
Temazepam	4.656	5975289	11555.08	27.6	403.92	26143383	10.0000 ng/ml
Topiramate	3.849	131187	71.55	44.3	47244.86	430017	10.0000 ng/ml
Tramadol	3.409	23866656	906.58	1.7	102.12	56683319	10.0000 ng/ml
Trazodone	4.017	5428121	1300.64	79.7	4703.70	23906944	10.0000 ng/ml
Venlafaxine	3.778	10178177	2910.00	30.6	429.35	11633779	10.0000 ng/ml
Zaleplon	4.332	3275976	848.27	75.7	1055593.02	38744223	10.0000 ng/ml
Zolpidem	3.744	9791063	12207.79	27.3	3482.25	38744223	10.0000 ng/ml
Zopiclone	3.694	646747	237937.97	57.1	850.75	2562903	10.0000 ng/ml

AM# 26: Screening of THC and Metabolites in Blood and Urine by LC-MS/MS

Extraction Date: 09/26/2023

Plate lot#: 220802

Mobile phase A: 10mM Amm Form

Blank Blood Lot: Lampire 23E52981

LCMS-QQQ ID: 069901

Analyst: Celena Shrum

Plate Retest Date: 07/23/2023- external control used

Mobile phase B: 0.1% Formic Acid in MeOH

Column: Phenomenex Phenyl Hexyl (4.6x50mm, 2.6um)

Blank Urine Lot: POC021022

Pre-Analytic:

- 1. Check levels of mobile phases and needle wash refill as needed. Ensure waste is not full.
- 2. Ensure correct column is installed and begin mobile phase flow allow to equilibrate ~ 30 minutes.

Analytic:

- 1. Remove standards, plate, controls, and samples from cold storage. Allow to reach room temperature.
- 2. Urine hydrolysis (if applicable): add 1.5mL urine to blank plate, add 250µl 1N KOH. Shake and incubate at 40 degrees for 15 minutes.
- 3. Using a calibrated pipette, add **1000µl blood or 1000µl hydrolyzed urine** into the appropriate wells of analytical (standards) plate. **Pipette ID: #42**
- 4. Place on shaking incubator at ambient temp., 900rpm for 15 minutes.
- 5. Pipette **500µL 0.1% formic acid in water to blood samples and 500µl of saturated phosphate buffer to urine samples** to the appropriate wells of the analytical plate.
- 6. Place on shaking incubator at ambient temp., 900rpm for 15 minutes.
- 7. Transfer **800µL of blood+acid mixture or urine+acid** to corresponding wells of SLE+ plate.
- 8. Apply positive pressure for approx. 10-15 seconds (or until no liquid remains on top of sorbent). **(Load at 85-100 PSI- Selector to the right)** Manifold ID: 067104
- 9. Wait 5 minutes.
- 10. Add **2.25mL MTBE. (Add in 3 increments of 750uL)**
- 11. Wait 5 minutes.
- 12. Apply positive pressure for approx. 15 seconds. **(10-15 PSI- Selector to the left).**
- 13. Add **2.25mL Hexane. (Add in 3 increments of 750uL)**
- 14. Wait 5 minutes.
- 15. Apply positive pressure for approx. 15 seconds. **(10-15 PSI- Selector to the left).**
- 16. Remove plate containing eluate. Place on SPE Dry and evaporate to dryness at approx. 35°C. **SPE Dry ID: 067103**
- 16. Reconstitute in **100µL 100% MeOH** and heat seal plate with foil. Place in autosampler and run worklist.

Post-Analytic

- 1. Create batch and process data.
- 2. Make any necessary integration changes, R² values ≥0.98 for each analyte
- 3. RT +/- 2% or 0.100 min, whichever is greater
- 4. Confirmation testing on case samples with a response for THC and OH-THC of 3ng/mL or greater and/or Carboxy-THC at 10ng/mL or greater (analyst discretion between 5-10ng/mL) may be pursued.
- 5. Did all QCs pass for each analyte? (if not, describe in comments section)
- 6. Central File Packet to include: LIMS Worklist, Method Checklist, Calibration and Control Reports

COMMENTS:

	1	2	3	4	5	6
a	cal 1ng	QC 2	M2023-3892-1	P2023-2907-1	M2023-3803-3	
b	cal 3 ng	Blood NEG	M2023-3893-1	P2023-2908-1	M2023-3987-4	
c	cal 5 ng	Blood External Control	M2023-3909-1	M2023-3276-2	M2023-4120-2	
d	cal 10ng	M2023-3719-1	P2023-2674-1	M2023-3638-2	P2023-2643-1	
e	cal 25 ng	M2023-3811-1	P2023-2855-1	M2023-3677-3	P2023-3009-1	
f	cal 50 ng	M2023-3813-2	P2023-2903-1	M2023-3702-5	Urine NEG	
g	cal 100 ng	M2023-3839-1	P2023-2905-2	M2023-3702-6	Urine External Control	
h	QC 1	M2023-3891-1	P2023-2906-1	M2023-3776-1		

AM #26 Cannabinoids Screen Results



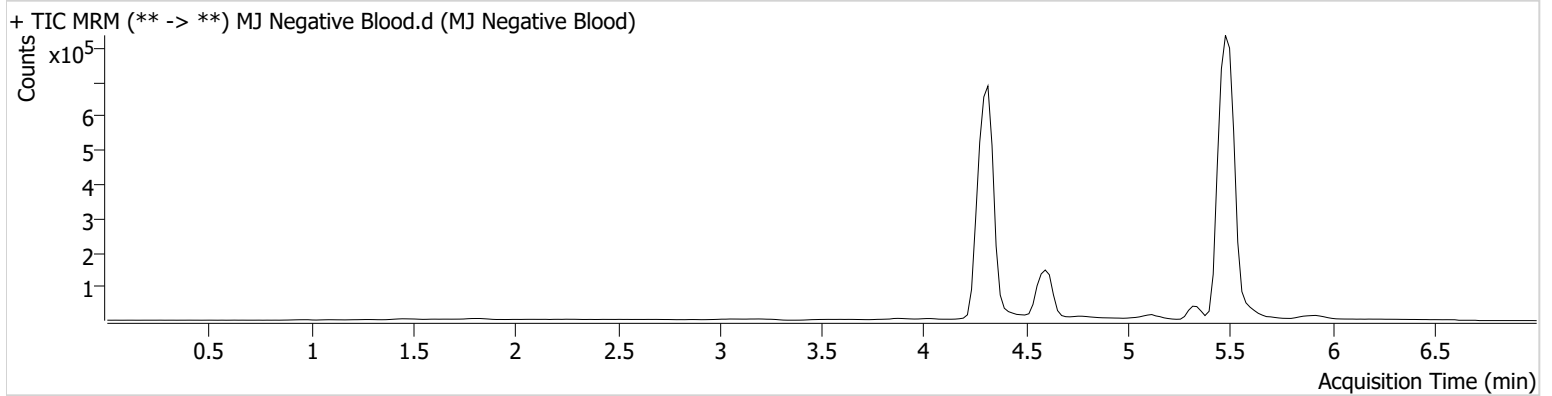
Batch results D:\MassHunter\Data\2023\AM 25 26\092623 AM 25 26 CS TS\QuantResults\AM 26 CS.batch.bin
Calibration Last Update 9/27/2023 10:40:08 AM

Instrument Falco (069901)
Type Sample
Acq. Method AM 26 THC.m
Sample Position P1-B2
Injection Volume 10
Acq. Date-Time 9/26/2023 4:03:41 PM
Sample Info.

Data File MJ Negative Blood.d
Sample MJ Negative Blood
Operator Celena Shrum
Comment

Only drugs and concentrations listed on the laboratory report itself are appropriate to be used for interpretation purposes. Any drugs or values included in the notes but not included on the report are used by laboratory personnel to make determinations/reach conclusions within the confines of the methods.

Sample Chromatogram





AM #26 Cannabinoids Screen Results

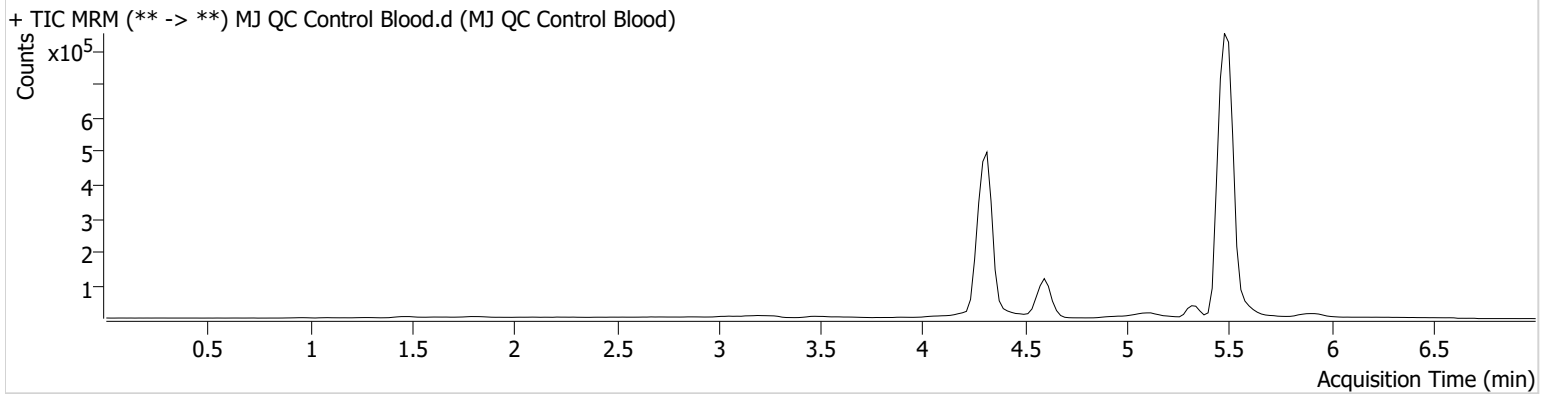
Batch results D:\MassHunter\Data\2023\AM 25 26\092623 AM 25 26 CS TS\QuantResults\AM 26 CS.batch.bin
Calibration Last Update 9/27/2023 10:40:08 AM

Instrument Falco (069901)
Type QC
Acq. Method AM 26 THC.m
Sample Position P1-H1
Injection Volume 10
Acq. Date-Time 9/26/2023 3:48:30 PM
Sample Info.

Data File MJ QC Control Blood.d
Sample MJ QC Control Blood
Operator Celena Shrum
Comment

Only drugs and concentrations listed on the laboratory report itself are appropriate to be used for interpretation purposes. Any drugs or values included in the notes but not included on the report are used by laboratory personnel to make determinations/reach conclusions within the confines of the methods.

Sample Chromatogram



Name	RT	Resp.	S/N	Ratio	S/N	ISTD Resp.	Final Conc.
THC	5.489	6003	20.13	217.0 High	∞	161500	4.6155 ng/ml
THC-COOH	4.616	63311	70.19	175.9	∞	406762	12.2857 ng/ml
THC-OH	4.322	26468	∞	882.3	∞	2238721	5.4354 ng/ml

AM #26 Cannabinoids Screen Results



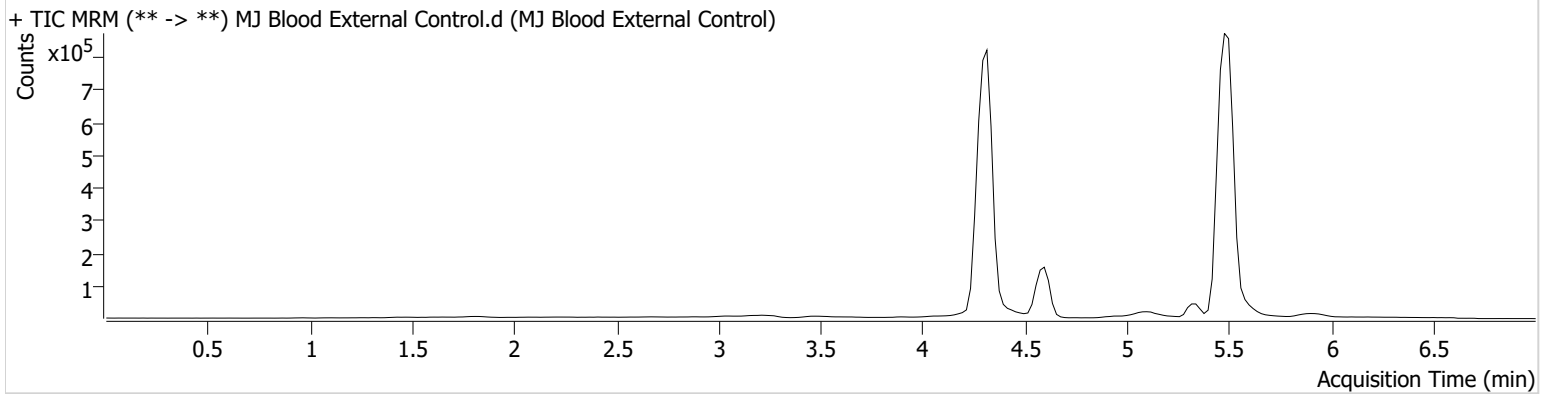
Batch results D:\MassHunter\Data\2023\AM 25 26\092623 AM 25 26 CS TS\QuantResults\AM 26 CS.batch.bin
Calibration Last Update 9/27/2023 10:40:08 AM

Instrument Falco (069901)
Type Sample
Acq. Method AM 26 THC.m
Sample Position P1-C2
Injection Volume 10
Acq. Date-Time 9/26/2023 4:11:15 PM
Sample Info.

Data File MJ Blood External Control.d
Sample MJ Blood External Control
Operator Celena Shrum
Comment

Only drugs and concentrations listed on the laboratory report itself are appropriate to be used for interpretation purposes. Any drugs or values included in the notes but not included on the report are used by laboratory personnel to make determinations/reach conclusions within the confines of the methods.

Sample Chromatogram



Name	RT	Resp.	S/N	Ratio	S/N	ISTD Resp.	Final Conc.
THC	5.449	114068	∞	34.7 Low	∞	331928	42.5711 ng/ml



Idaho State Police Forensic Services

AM #26 Screening of THC and Metabolites and AM #27 Confirmation of THC and Metabolites Blood External Control Prep Sheet

Methanol External Control Solution (Lot: WS091323)

10 µL of 1mg/mL THC in 9990 µL MeOH

Approximate concentration 1ug/mL.

<i>Component</i>	<i>Source</i>	<i>Source Lot Number</i>	<i>Expiration Date</i>
Methanol (LCMS)	Fisher	217005	-
THC	Cerilliant	FE05252135	02/28/2027
Prepared:	09/13/2023		
Expires:	09/13/2024		
Prepared By:	Tamara Salazar		

Blood External Control Solution (Lot: 091323)

500 ul of methanol external control solution was added to 9500 ul of blood.

Approximately 50ng/mL each

<i>Component</i>	<i>Source</i>	<i>Source Lot Number</i>
Negative Blood	Lampire	23E52981
Methanol External Control Solution	-	WS101322
Prepared:	09/13/2023	
Expires:	09/13/2024 -OK per method CS 10/10/23	
Prepared by:	Tamara Salazar	

AM #26 Cannabinoids Screen Results



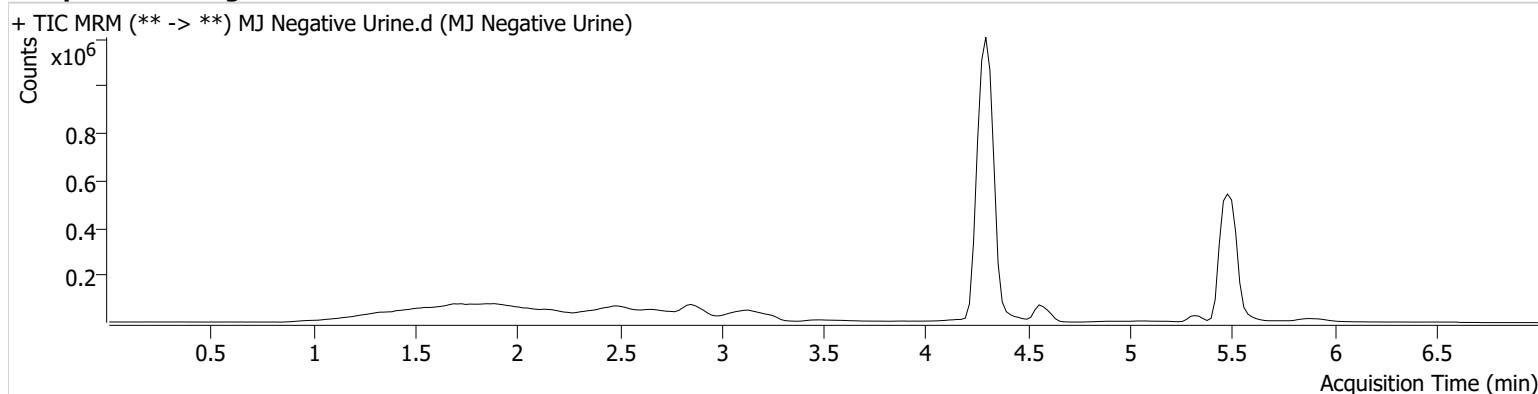
Batch results D:\MassHunter\Data\2023\AM 25 26\092623 AM 25 26 CS TS\QuantResults\AM 26 CS.batch.bin
Calibration Last Update 9/27/2023 10:40:08 AM

Instrument Falco (069901)
Type Sample
Acq. Method AM 26 THC.m
Sample Position P1-F5
Injection Volume 10
Acq. Date-Time 9/26/2023 6:12:22 PM
Sample Info.

Data File MJ Negative Urine.d
Sample MJ Negative Urine
Operator Celena Shrum
Comment

Only drugs and concentrations listed on the laboratory report itself are appropriate to be used for interpretation purposes. Any drugs or values included in the notes but not included on the report are used by laboratory personnel to make determinations/reach conclusions within the confines of the methods.

Sample Chromatogram





AM #26 Cannabinoids Screen Results

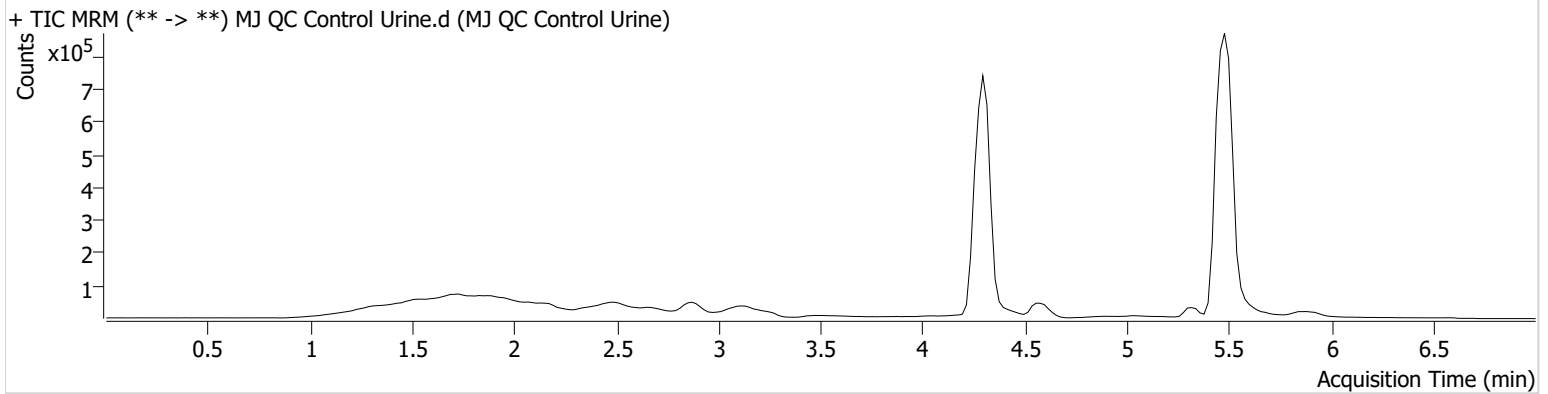
Batch results D:\MassHunter\Data\2023\AM 25 26\092623 AM 25 26 CS TS\QuantResults\AM 26 CS.batch.bin
Calibration Last Update 9/27/2023 10:40:08 AM

Instrument Falco (069901)
Type QC
Acq. Method AM 26 THC.m
Sample Position P1-A2
Injection Volume 10
Acq. Date-Time 9/26/2023 7:50:43 PM
Sample Info.

Data File MJ QC Control Urine.d
Sample MJ QC Control Urine
Operator Celena Shrum
Comment

Only drugs and concentrations listed on the laboratory report itself are appropriate to be used for interpretation purposes. Any drugs or values included in the notes but not included on the report are used by laboratory personnel to make determinations/reach conclusions within the confines of the methods.

Sample Chromatogram



Name	RT	Resp.	S/N	Ratio	S/N	ISTD Resp.	Final Conc.
THC	5.429	8222	25.38	177.9 High	∞	224892	4.5400 ng/ml
THC-COOH	4.596	27319	∞	168.5	∞	211243	10.0634 ng/ml
THC-OH	4.302	32660	∞	765.6	155.23	3543234	4.1926 ng/ml



AM #26 Cannabinoids Screen Results

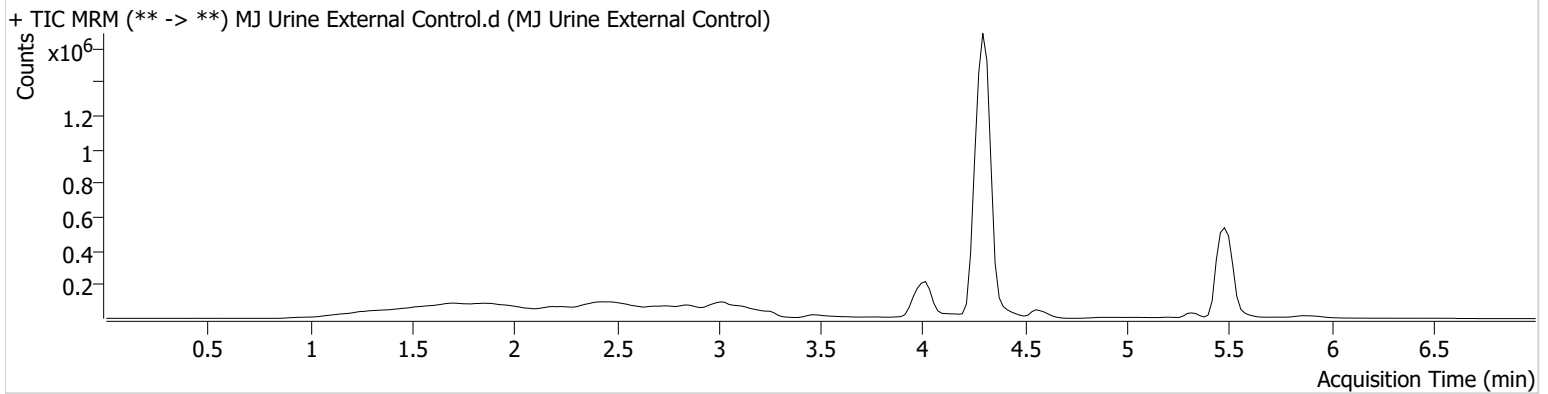
Batch results D:\MassHunter\Data\2023\AM 25 26\092623 AM 25 26 CS TS\QuantResults\AM 26 CS.batch.bin
Calibration Last Update 9/27/2023 10:40:08 AM

Instrument Falco (069901)
Type Sample
Acq. Method AM 26 THC.m
Sample Position P1-G5
Injection Volume 10
Acq. Date-Time 9/26/2023 6:19:56 PM
Sample Info.

Data File MJ Urine External Control.d
Sample MJ Urine External Control
Operator Celena Shrum
Comment

Only drugs and concentrations listed on the laboratory report itself are appropriate to be used for interpretation purposes. Any drugs or values included in the notes but not included on the report are used by laboratory personnel to make determinations/reach conclusions within the confines of the methods.

Sample Chromatogram



Name	RT	Resp.	S/N	Ratio	S/N	ISTD Resp.	Final Conc.
THC-COOH	4.596	21962	∞	154.1	∞	231872	7.1413 ng/ml

**In analysts' discretion range so evaluated as positive per AM 26 criteria.



Idaho State Police Forensic Services

AM #26 Screening of THC and Metabolites and AM #27 Confirmation of THC and Metabolites Urine External Control Prep Sheet

Methanol External Control Solution (Lot: WS101322)

100 µL of 100 µg/mL C-THC in 9900 µL MeOH

Approximate concentration 1ug/mL.

<i>Component</i>	<i>Source</i>	<i>Source Lot Number</i>	<i>Expiration Date</i>
Methanol (LCMS)	Fisher	215245	-
C-THC	Cerilliant	FE08011801	08/31/2023
Prepared:	10/13/2022		
Expires:	08/31/2023		
Prepared By:	Celena Shrum		

Urine External Control Solution (Lot: 101322)

200 ul of methanol external control solution was added to 9800 ul of urine.

Approximately 20ng/mL each

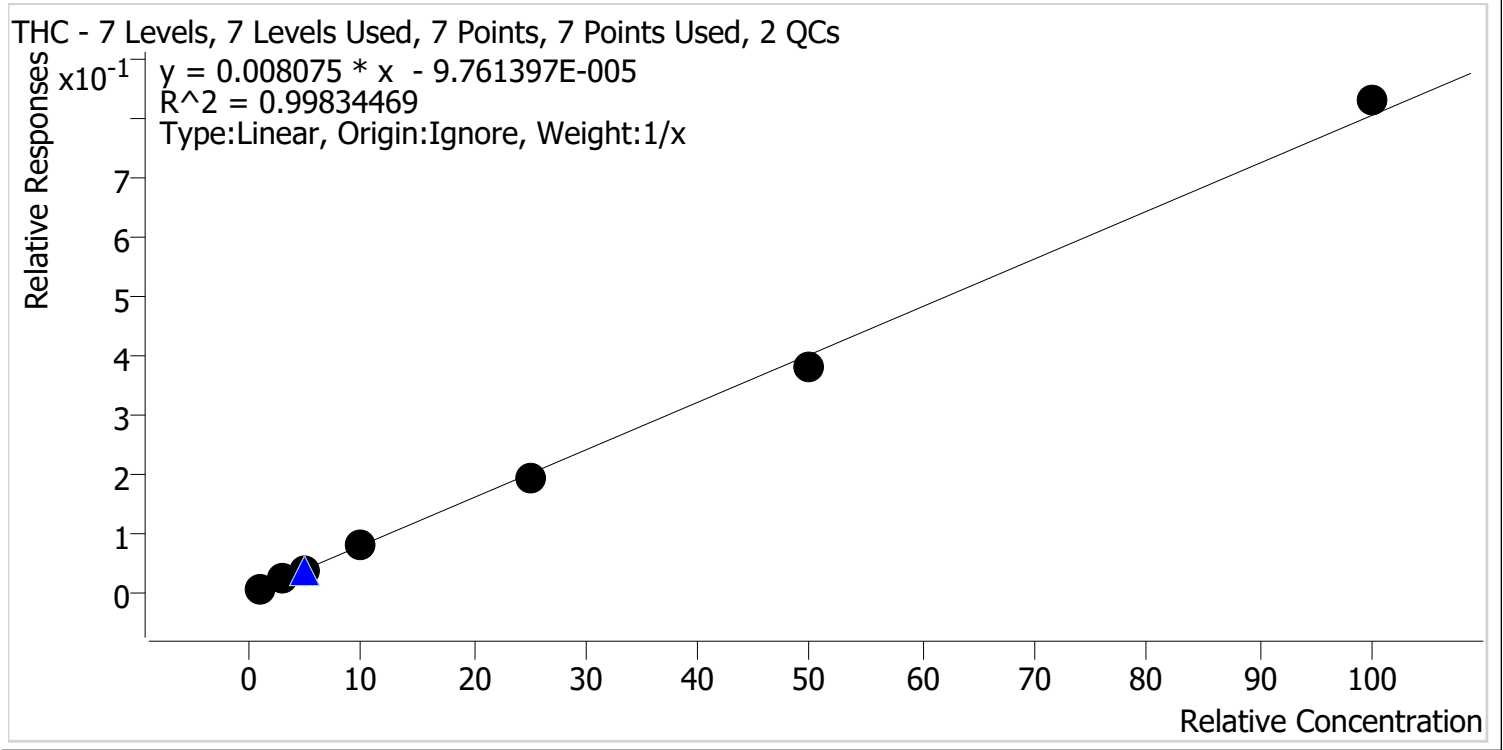
<i>Component</i>	<i>Source</i>	<i>Source Lot Number</i>
Negative Urine	Pocatello Lab	POC021022
Methanol External Control Solution	-	WS101322
Prepared:	10/13/2022	
Expires:	08/31/2023	
Prepared by:	Celena Shrum	



cg

AM #26 Cannabinoids Screen Calibration Curve Report

Batch results D:\MassHunter\Data\2023\AM 25 26\092623 AM 25 26 CS TS\QuantResults\AM 26 CS.batch.bin
Last Cal. Update 9/27/2023 10:40 AM
Analyst Name ISP\Datastor
Analyte THC **Internal Standard** THC-D3



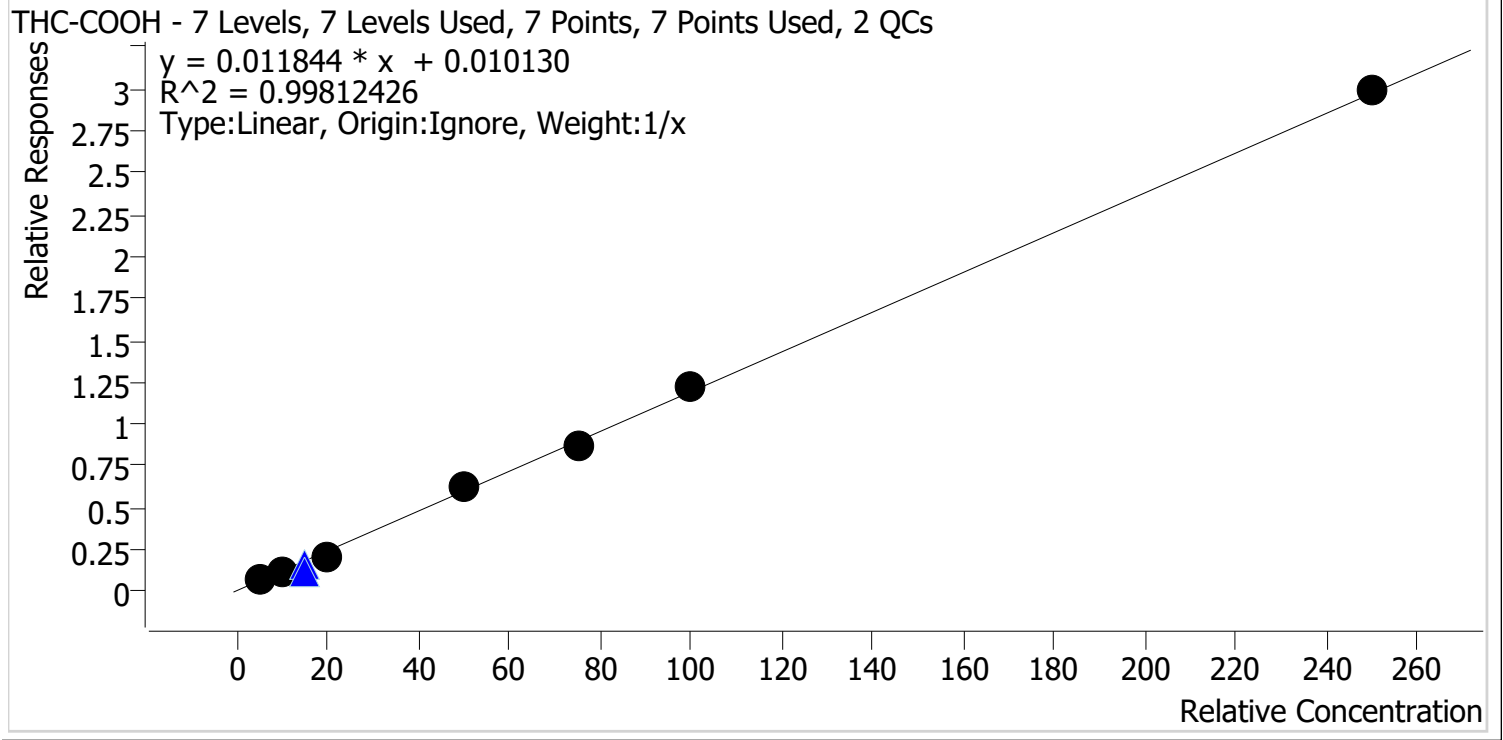
Sample	Level	Enabled	Expected Concentration	Final Concentration	Accuracy
MJ Cal 1	1	✓	1.0	1.0	96.8
MJ Cal 2	2	✓	3.0	3.2	106.8
MJ Cal 3	3	✓	5.0	5.0	100.7
MJ Cal 4	4	✓	10.0	10.1	100.6
MJ Cal 5	5	✓	25.0	24.4	97.5
MJ Cal 6	6	✓	50.0	47.3	94.5
MJ Cal 7	7	✓	100.0	103.1	103.1

CS



AM #26 Cannabinoids Screen Calibration Curve Report

Batch results D:\MassHunter\Data\2023\AM 25 26\092623 AM 25 26 CS TS\QuantResults\AM 26 CS.batch.bin
Last Cal. Update 9/27/2023 10:40 AM
Analyst Name ISP\Datastor
Analyte THC-COOH **Internal Standard** THC-COOH-D9



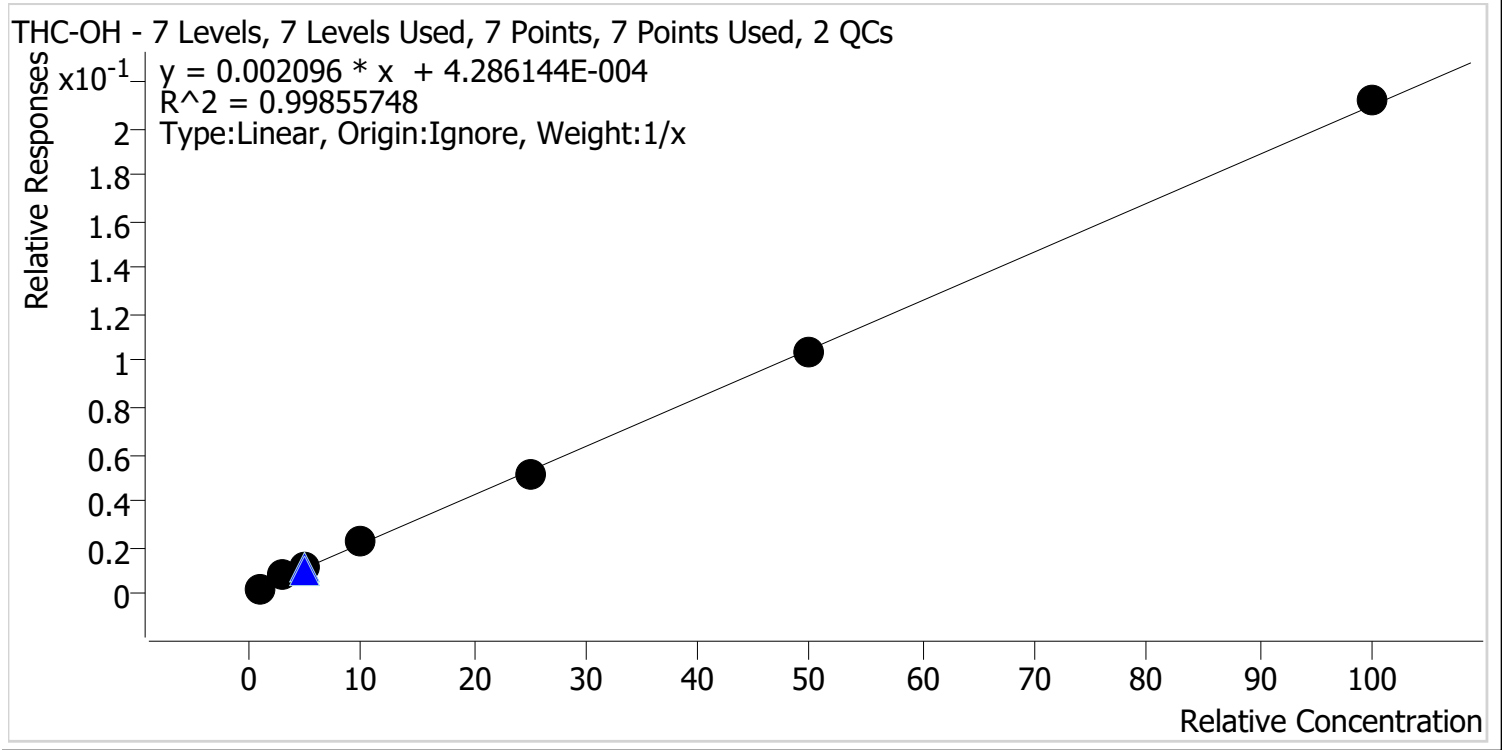
Sample	Level	Enabled	Expected Concentration	Final Concentration	Accuracy
MJ Cal 1	1	✓	5.0	5.9	117.6
MJ Cal 2	2	✓	10.0	9.3	92.5
MJ Cal 3	3	✓	20.0	17.4	87.2
MJ Cal 4	4	✓	50.0	51.9	103.8
MJ Cal 5	5	✓	75.0	72.5	96.7
MJ Cal 6	6	✓	100.0	101.6	101.6
MJ Cal 7	7	✓	250.0	251.4	100.5

CS



AM #26 Cannabinoids Screen Calibration Curve Report

Batch results D:\MassHunter\Data\2023\AM 25 26\092623 AM 25 26 CS TS\QuantResults\AM 26 CS.batch.bin
Last Cal. Update 9/27/2023 10:40 AM
Analyst Name ISP\Datastor
Analyte THC-OH **Internal Standard** THC-OH-D3



Sample	Level	Enabled	Expected Concentration	Final Concentration	Accuracy
MJ Cal 1	1	✓	1.0	0.8	78.1
MJ Cal 2	2	✓	3.0	3.4	114.1
MJ Cal 3	3	✓	5.0	5.5	110.1
MJ Cal 4	4	✓	10.0	10.3	102.8
MJ Cal 5	5	✓	25.0	24.0	95.9
MJ Cal 6	6	✓	50.0	49.0	98.0
MJ Cal 7	7	✓	100.0	101.0	101.0



AM #26 Cannabinoids Screen Results

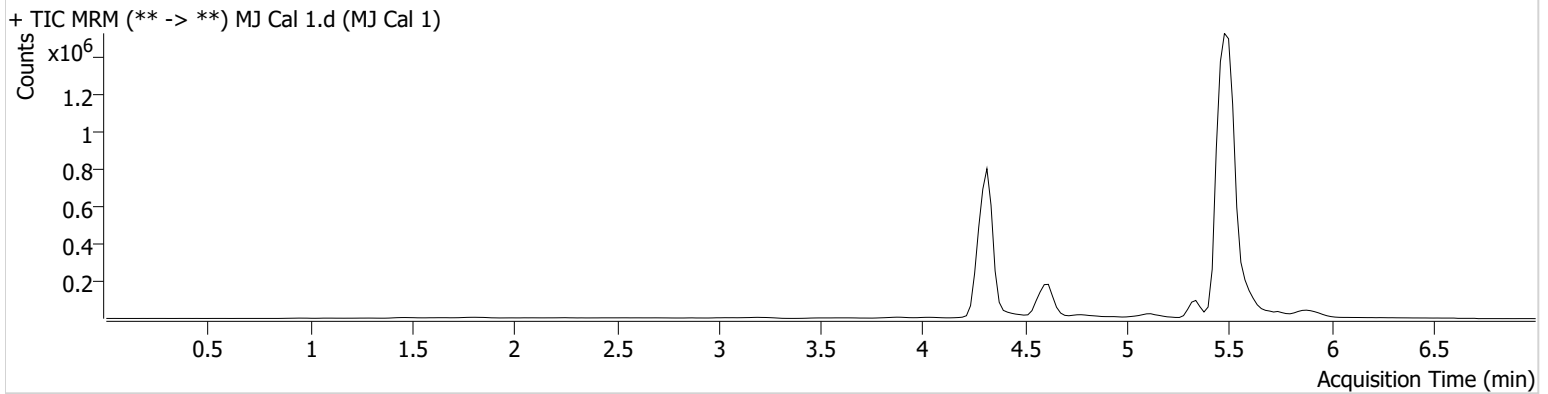
Batch results D:\MassHunter\Data\2023\AM 25 26\092623 AM 25 26 CS TS\QuantResults\AM 26 CS.batch.bin
Calibration Last Update 9/27/2023 10:40:08 AM

Instrument Falco (069901)
Type Cal
Acq. Method AM 26 THC.m
Sample Position P1-A1
Injection Volume 10
Acq. Date-Time 9/26/2023 2:55:21 PM
Sample Info.

Data File MJ Cal 1.d
Sample MJ Cal 1
Operator Celena Shrum
Comment

Only drugs and concentrations listed on the laboratory report itself are appropriate to be used for interpretation purposes. Any drugs or values included in the notes but not included on the report are used by laboratory personnel to make determinations/reach conclusions within the confines of the methods.

Sample Chromatogram



Name	RT	Resp.	S/N	Ratio	S/N	ISTD Resp.	Final Conc.
THC	5.469	4023	4.42 Low	588.2 High	∞	521354	0.9678 ng/ml
THC-COOH	4.636	64198	65.90	165.4	∞	804734	5.8800 ng/ml
THC-OH	4.322	7900	∞	1046.0 High	∞	3824404	0.7810 ng/ml



AM #26 Cannabinoids Screen Results

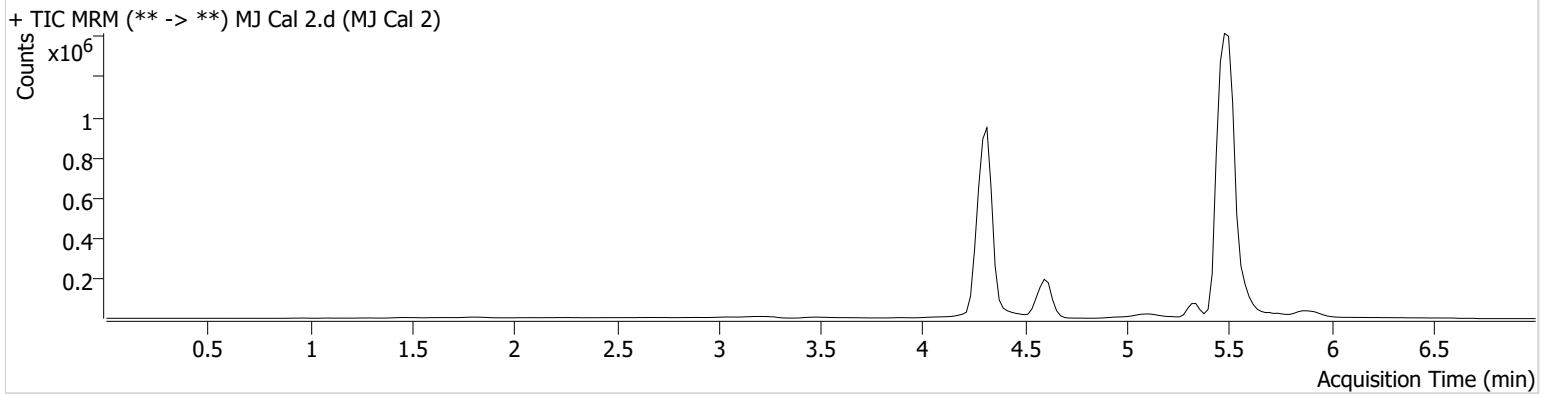
Batch results D:\MassHunter\Data\2023\AM 25 26\092623 AM 25 26 CS TS\QuantResults\AM 26 CS.batch.bin
Calibration Last Update 9/27/2023 10:40:08 AM

Instrument Falco (069901)
Type Cal
Acq. Method AM 26 THC.m
Sample Position P1-B1
Injection Volume 10
Acq. Date-Time 9/26/2023 3:03:05 PM
Sample Info.

Data File MJ Cal 2.d
Sample MJ Cal 2
Operator Celena Shrum
Comment

Only drugs and concentrations listed on the laboratory report itself are appropriate to be used for interpretation purposes. Any drugs or values included in the notes but not included on the report are used by laboratory personnel to make determinations/reach conclusions within the confines of the methods.

Sample Chromatogram



Name	RT	Resp.	S/N	Ratio	S/N	ISTD Resp.	Final Conc.
THC	5.449	9523	∞	244.3 High	∞	369611	3.2028 ng/ml
THC-COOH	4.616	88329	821.08	178.7	∞	737708	9.2537 ng/ml
THC-OH	4.322	33520	∞	839.5	∞	4408709	3.4226 ng/ml

AM #26 Cannabinoids Screen Results



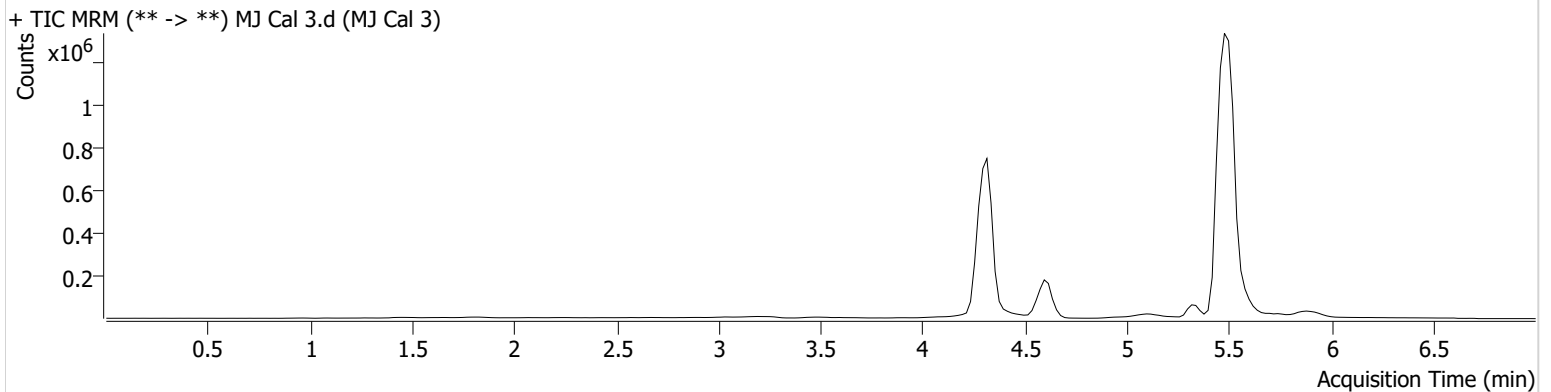
Batch results D:\MassHunter\Data\2023\AM 25 26\092623 AM 25 26 CS TS\QuantResults\AM 26 CS.batch.bin
Calibration Last Update 9/27/2023 10:40:08 AM

Instrument Falco (069901)
Type Cal
Acq. Method AM 26 THC.m
Sample Position P1-C1
Injection Volume 10
Acq. Date-Time 9/26/2023 3:10:39 PM
Sample Info.

Data File MJ Cal 3.d
Sample MJ Cal 3
Operator Celena Shrum
Comment

Only drugs and concentrations listed on the laboratory report itself are appropriate to be used for interpretation purposes. Any drugs or values included in the notes but not included on the report are used by laboratory personnel to make determinations/reach conclusions within the confines of the methods.

Sample Chromatogram



Name	RT	Resp.	S/N	Ratio	S/N	ISTD Resp.	Final Conc.
THC	5.510	13667	∞	165.8 High	27.49	336980	5.0350 ng/ml
THC-COOH	4.616	121674	∞	173.8	99.48	561648	17.4350 ng/ml
THC-OH	4.322	40707	∞	820.8	∞	3402237	5.5031 ng/ml



AM #26 Cannabinoids Screen Results

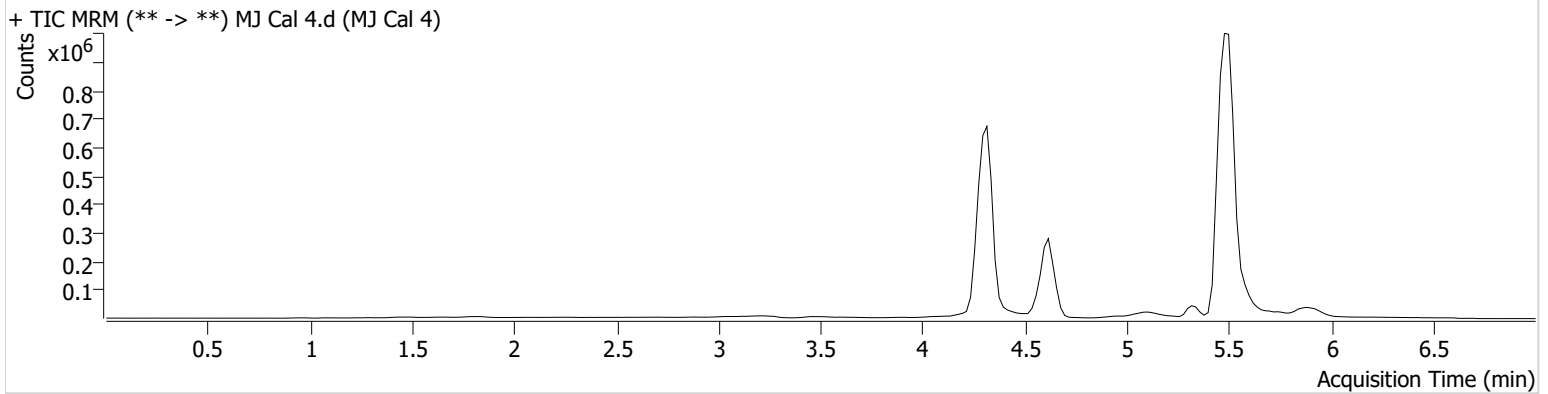
Batch results D:\MassHunter\Data\2023\AM 25 26\092623 AM 25 26 CS TS\QuantResults\AM 26 CS.batch.bin
Calibration Last Update 9/27/2023 10:40:08 AM

Instrument Falco (069901)
Type Cal
Acq. Method AM 26 THC.m
Sample Position P1-D1
Injection Volume 10
Acq. Date-Time 9/26/2023 3:18:14 PM
Sample Info.

Data File MJ Cal 4.d
Sample MJ Cal 4
Operator Celena Shrum
Comment

Only drugs and concentrations listed on the laboratory report itself are appropriate to be used for interpretation purposes. Any drugs or values included in the notes but not included on the report are used by laboratory personnel to make determinations/reach conclusions within the confines of the methods.

Sample Chromatogram



Name	RT	Resp.	S/N	Ratio	S/N	ISTD Resp.	Final Conc.
THC	5.509	18292	203.22	104.6 Low	∞	225435	10.0608 ng/ml
THC-COOH	4.616	323865	∞	158.2	236.77	518318	51.8985 ng/ml
THC-OH	4.322	62445	∞	795.5	∞	2840528	10.2825 ng/ml



AM #26 Cannabinoids Screen Results

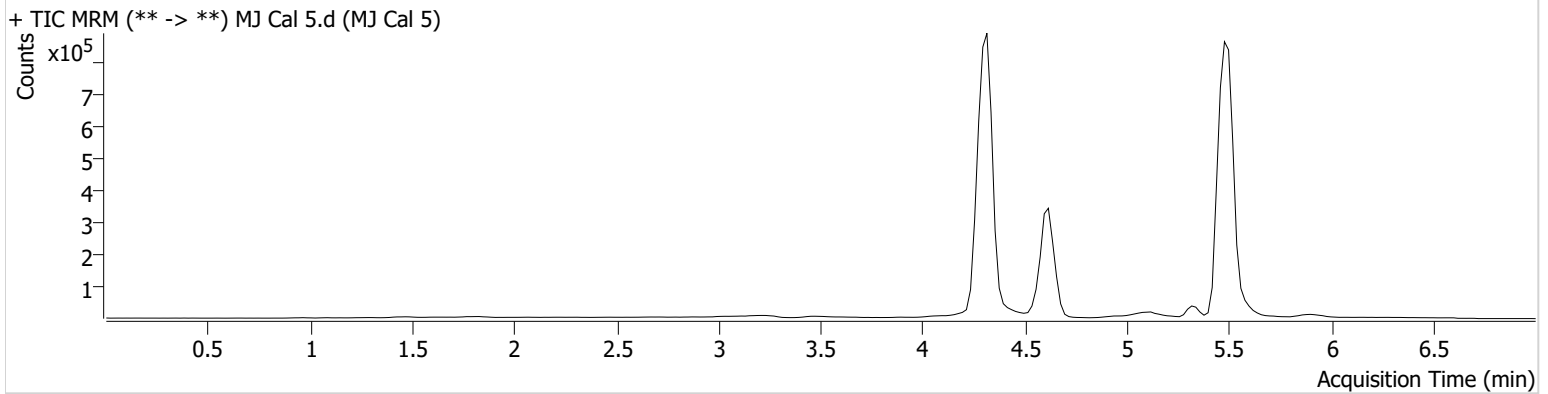
Batch results D:\MassHunter\Data\2023\AM 25 26\092623 AM 25 26 CS TS\QuantResults\AM 26 CS.batch.bin
Calibration Last Update 9/27/2023 10:40:08 AM

Instrument Falco (069901)
Type Cal
Acq. Method AM 26 THC.m
Sample Position P1-E1
Injection Volume 10
Acq. Date-Time 9/26/2023 3:25:48 PM
Sample Info.

Data File MJ Cal 5.d
Sample MJ Cal 5
Operator Celena Shrum
Comment

Only drugs and concentrations listed on the laboratory report itself are appropriate to be used for interpretation purposes. Any drugs or values included in the notes but not included on the report are used by laboratory personnel to make determinations/reach conclusions within the confines of the methods.

Sample Chromatogram



Name	RT	Resp.	S/N	Ratio	S/N	ISTD Resp.	Final Conc.
THC	5.510	41886	∞	50.5 Low	198.36	212864	24.3809 ng/ml
THC-COOH	4.616	453985	559.29	156.3	163.20	522260	72.5352 ng/ml
THC-OH	4.322	157207	∞	764.8	∞	3102402	23.9682 ng/ml



AM #26 Cannabinoids Screen Results

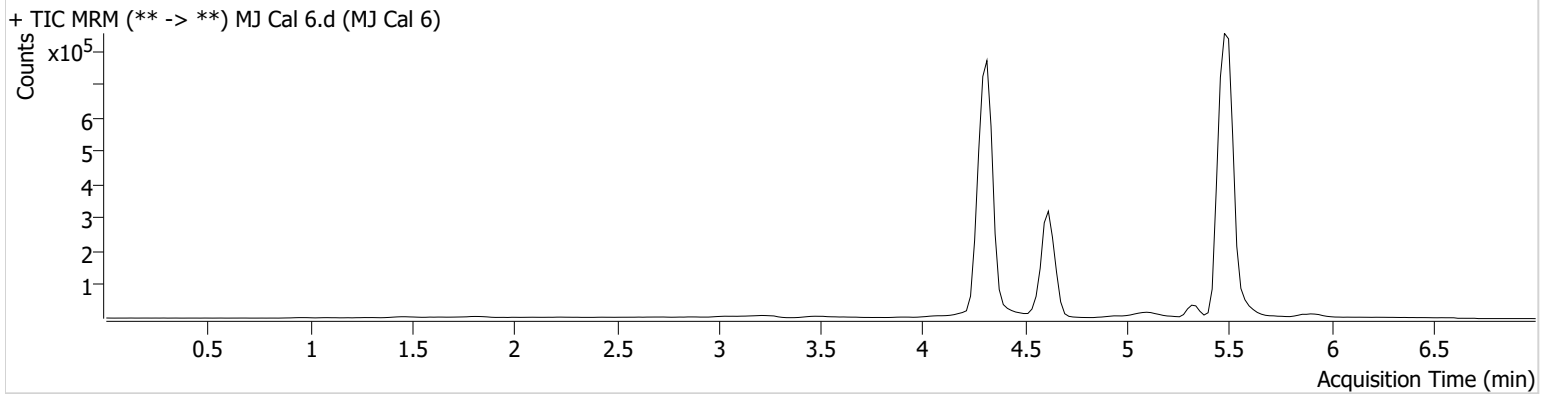
Batch results D:\MassHunter\Data\2023\AM 25 26\092623 AM 25 26 CS TS\QuantResults\AM 26 CS.batch.bin
Calibration Last Update 9/27/2023 10:40:08 AM

Instrument Falco (069901)
Type Cal
Acq. Method AM 26 THC.m
Sample Position P1-F1
Injection Volume 10
Acq. Date-Time 9/26/2023 3:33:22 PM
Sample Info.

Data File MJ Cal 6.d
Sample MJ Cal 6
Operator Celena Shrum
Comment

Only drugs and concentrations listed on the laboratory report itself are appropriate to be used for interpretation purposes. Any drugs or values included in the notes but not included on the report are used by laboratory personnel to make determinations/reach conclusions within the confines of the methods.

Sample Chromatogram



Name	RT	Resp.	S/N	Ratio	S/N	ISTD Resp.	Final Conc.
THC	5.469	57962	∞	45.7 Low	∞	151878	47.2748 ng/ml
THC-COOH	4.616	449245	2057.83	155.6	246.73	370093	101.6289 ng/ml
THC-OH	4.322	208055	∞	744.1	∞	2016505	49.0142 ng/ml



AM #26 Cannabinoids Screen Results

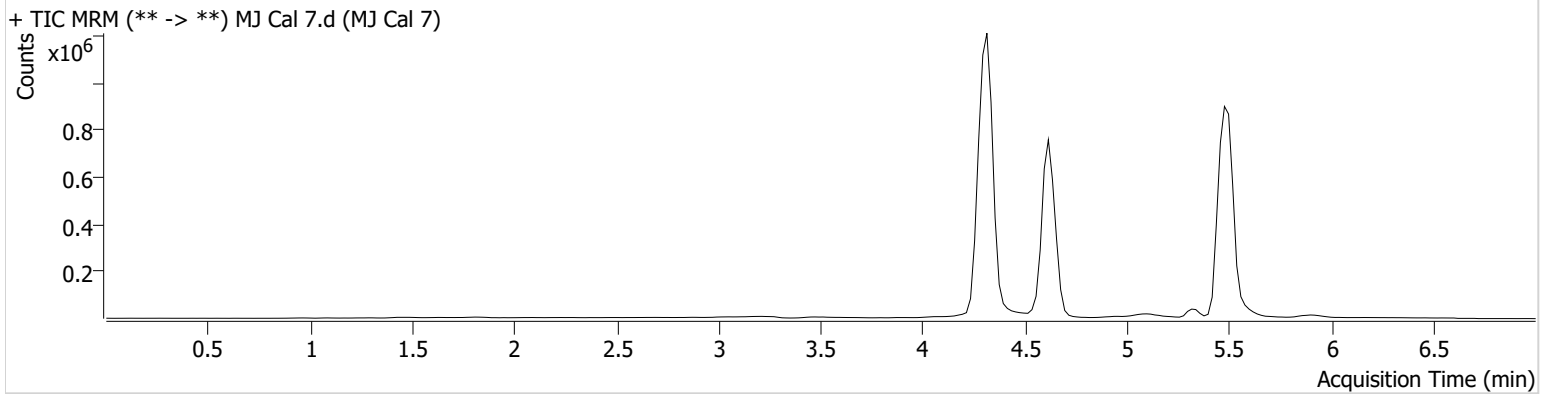
Batch results D:\MassHunter\Data\2023\AM 25 26\092623 AM 25 26 CS TS\QuantResults\AM 26 CS.batch.bin
Calibration Last Update 9/27/2023 10:40:08 AM

Instrument Falco (069901)
Type Cal
Acq. Method AM 26 THC.m
Sample Position P1-G1
Injection Volume 10
Acq. Date-Time 9/26/2023 3:40:56 PM
Sample Info.

Data File MJ Cal 7.d
Sample MJ Cal 7
Operator Celena Shrum
Comment

Only drugs and concentrations listed on the laboratory report itself are appropriate to be used for interpretation purposes. Any drugs or values included in the notes but not included on the report are used by laboratory personnel to make determinations/reach conclusions within the confines of the methods.

Sample Chromatogram



Name	RT	Resp.	S/N	Ratio	S/N	ISTD Resp.	Final Conc.
THC	5.449	119871	368.16	34.0 Low	∞	144036	103.0779 ng/ml
THC-COOH	4.616	1180372	∞	158.7	∞	395110	251.3686 ng/ml
THC-OH	4.322	458882	∞	733.6	∞	2162372	101.0285 ng/ml